

# Louvres

for plant screening applications

- Simple screen louvre system
- Standard designs for wind loads up to 1500 n/m<sup>2</sup>
- Standard steel support details



Louvres Sunscreens Natural Ventilators

Ruskin Air Management Limited  
[www.ruskinuk.co.uk](http://www.ruskinuk.co.uk)

# Simple louvre systems for screening of air conditioning plant

## Specification

Extruded aluminium to ENAW 6063T6.

## Mullions

50 mm x 65 mm mullions are provided at max 1200 mm centres.

Mullions may be single or double subject to length and wind load. (See mullion chart for details).

## Blades

Standard is 75S providing a 75 mm blade pitch. Blades may be fitted conventionally or inverted (to provide sight proof screen viewed from below).

## Corners

Standard corner has pressed aluminium cover plate. Mitre (welded) corners are available at extra cost.

## Free area

Screens provide approximately 50% of free area.

## Doors

Hinged louvred access doors can be supplied.

## Finish

Aluminium components may be anodised or polyester powder coated.

Steel components are hot dip galvanised; polyester powder coat can be provided.

## Installation

We recommend that fixing is carried out by our experienced installation team.

## Survey / drawings

We offer a site survey service prior to detail drawing preparation.

## Steelwork

Screen louvres may be fitted to customer designed steelwork or steel can be supplied by Naco in accordance with details shown. For applications outside the scope of this publication please contact our design office.

## After construction applications

Where it is not possible to penetrate an existing roof structure, screens can be fitted to concrete blocks of suitable size and weight to resist overturning moment (blocks not by Naco).

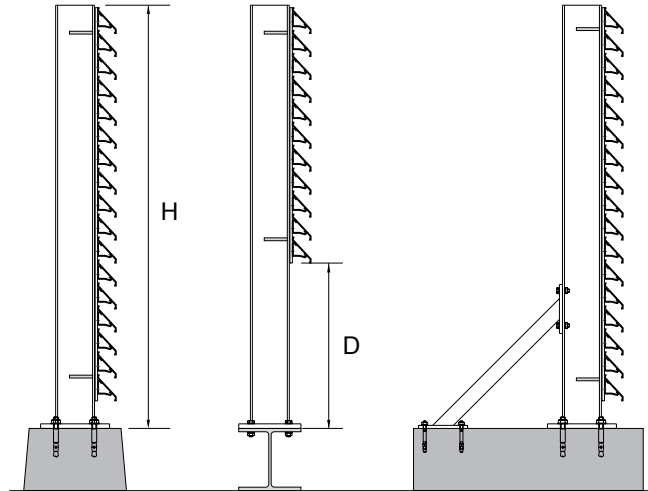
## Standard construction based on maximum 1500 n/m<sup>2</sup> wind load.

- |    |                                       |                                      |
|----|---------------------------------------|--------------------------------------|
| 1. | <b>Column Height</b><br>Up to 1500 mm | <b>Column Centres</b><br>Max 2400 mm |
|----|---------------------------------------|--------------------------------------|

Column = 100 x 65 x 7 RSA  
Horizontal rails 75 x 75 x 6 RSA

- |    |  |   |
|----|--|---|
| 2. | <b>Column Height</b><br>Max 2300 mm<br>Max 2500 mm | <b>Column Centres</b><br>Max 2400 mm<br>Max 2000 mm |
|----|--|---|

Column = 127 x 76 x 13 UB  
Horizontal rails 75 x 75 x 6 RSA



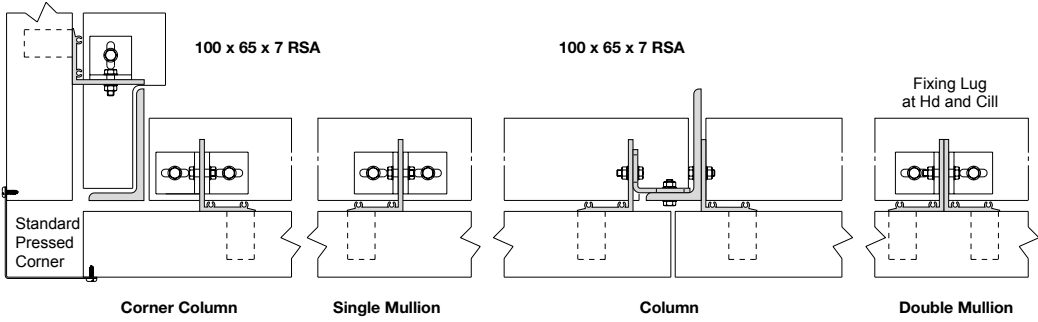
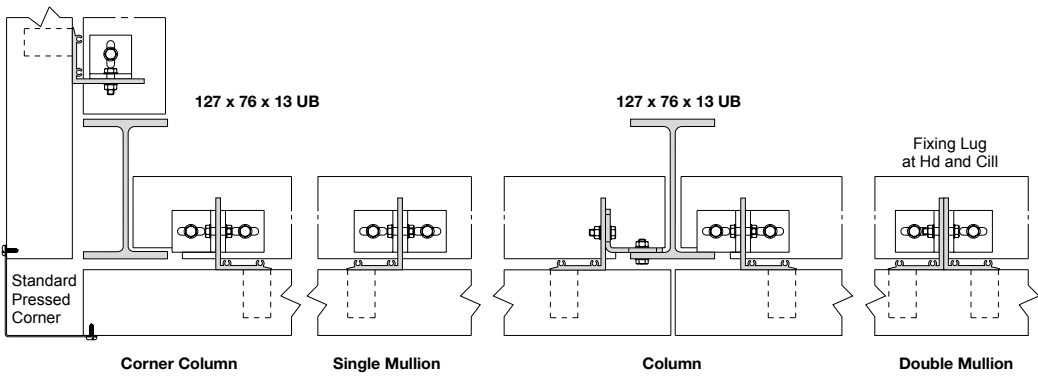
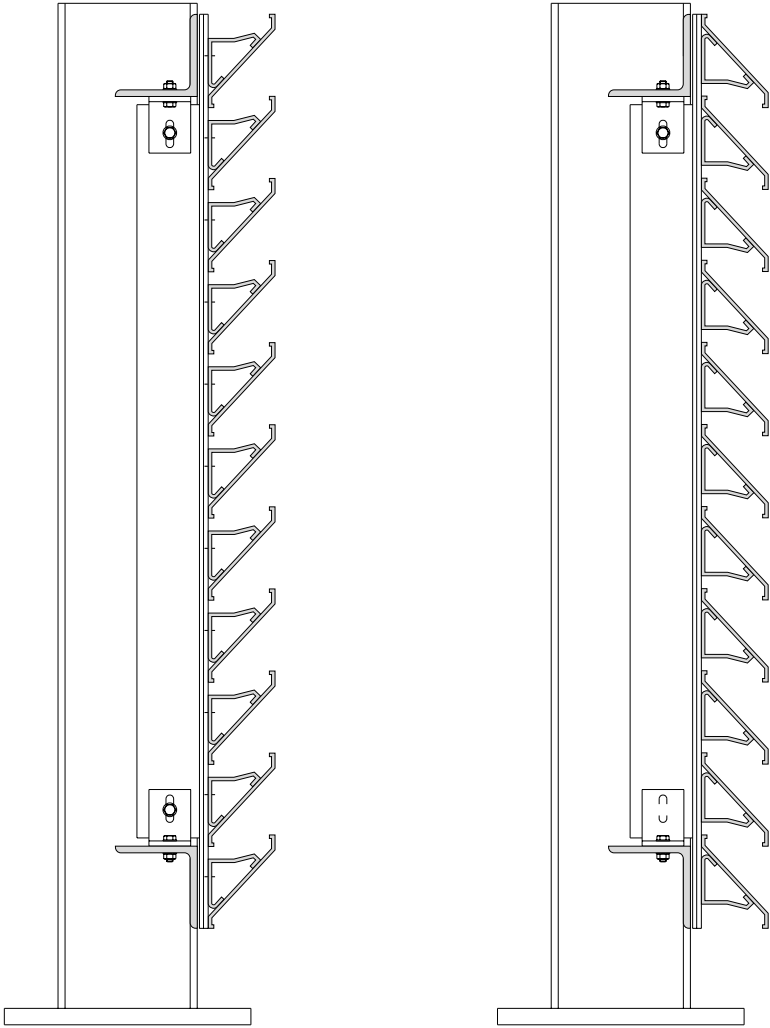
If  $D > H/2$  refer to Design Office.

Braced screens can be provided to reduce the forces on fixing anchors.

Standard brace for UB column is 48 mm x 3.2 mm CHS with base and end plates sized to suit.

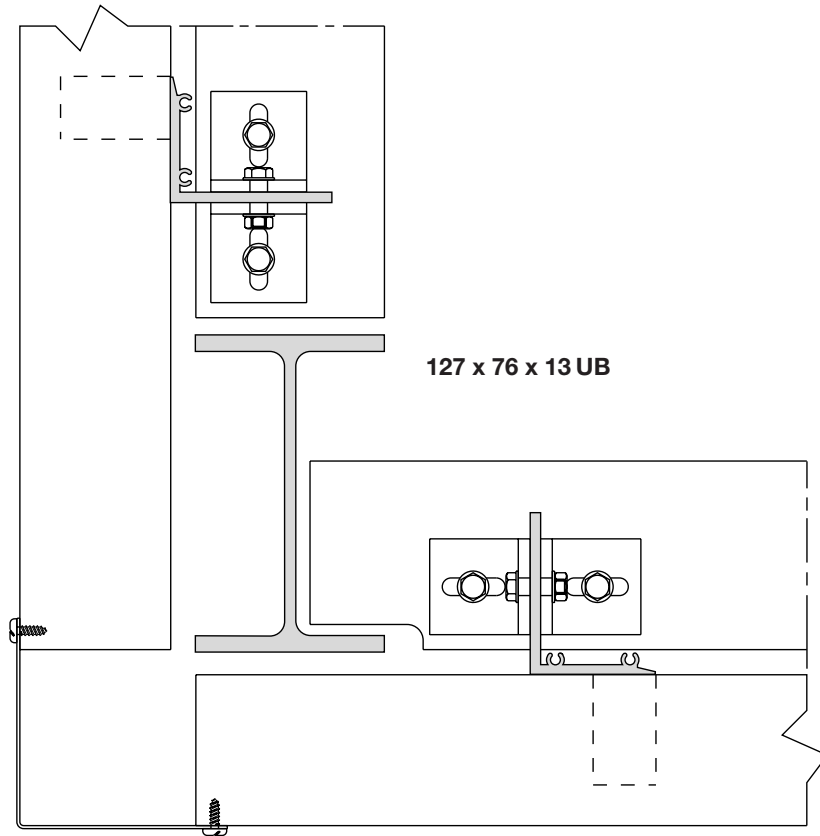


# Typical installations for Naco steelwork

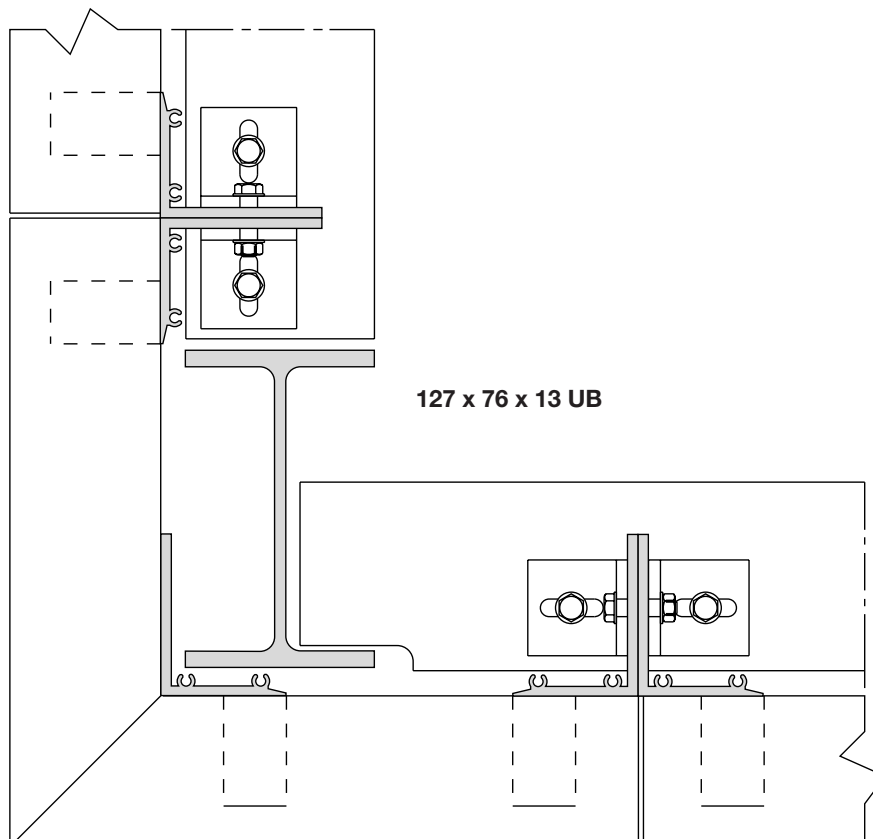


# Typical installations for Naco steelwork

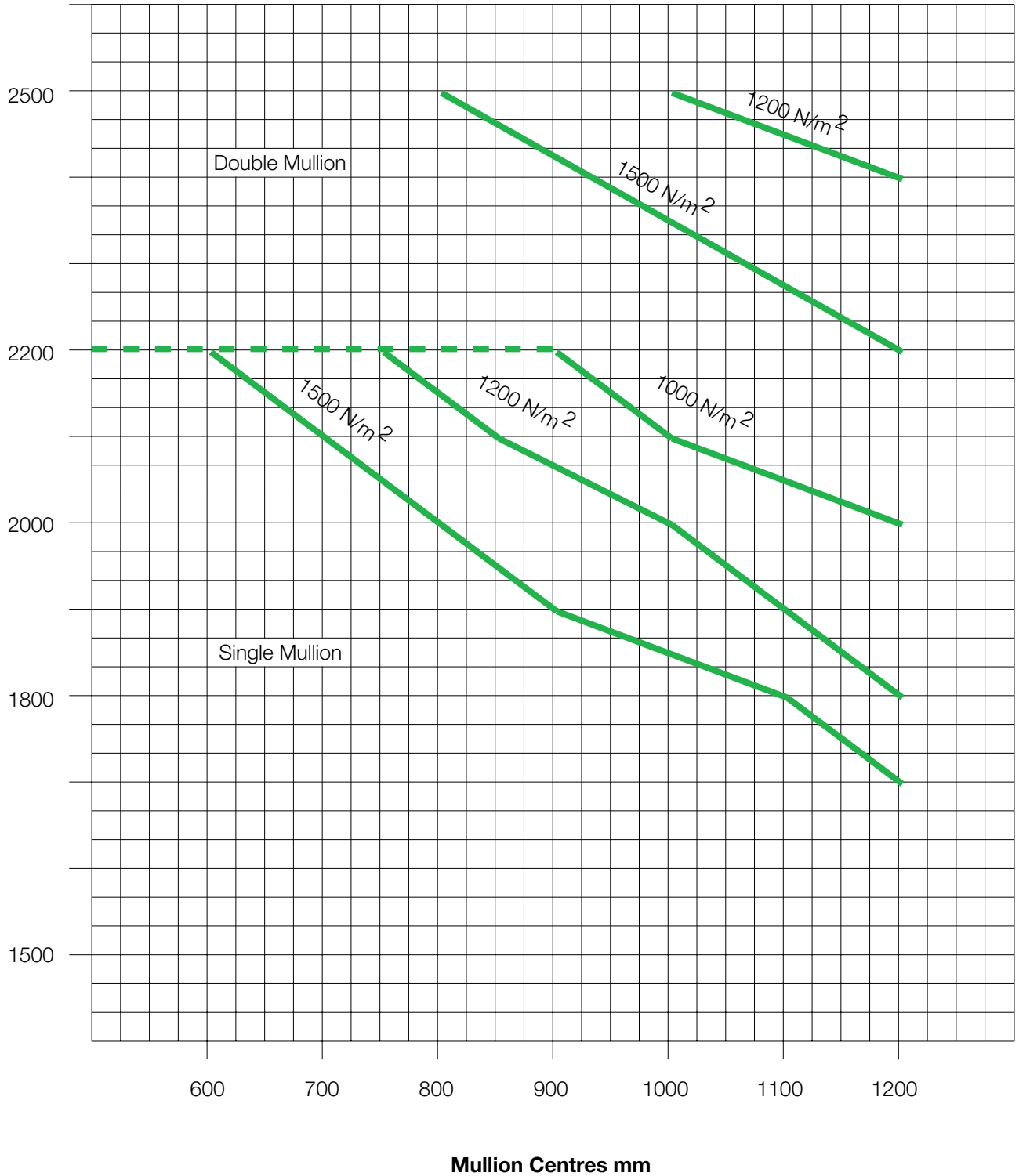
Standard Pressed Corner



Mitred Corner



# 75S Plant Screen Mullion Chart



## Ruskin Air Management Limited is a BS EN ISO 9000 registered company.

The statements made in this brochure or by our representatives in consequence of any enquiries arising out of this document are given for information purposes only. They are not intended to have any legal effect and the company is not to be regarded as bound thereby. The company will only accept obligations which are expressly negotiated for and agreed and incorporated into a written agreement made with its customers.

Due to a policy of continuous product development the specification and details contained herein are subject to alteration without prior notice.

Comprehensive and detailed information is available for all Naco products. Visit our website at [www.naco.co.uk](http://www.naco.co.uk)

# Ruskin Air Management Limited

Stourbridge Road, Bridgnorth  
Shropshire, WV15 5BB  
Tel: 01746 761921  
Fax: 01746 766450  
Email: [sales@naco.co.uk](mailto:sales@naco.co.uk)  
Website: [www.naco.co.uk](http://www.naco.co.uk)



Louvres Sunscreens Natural Ventilators